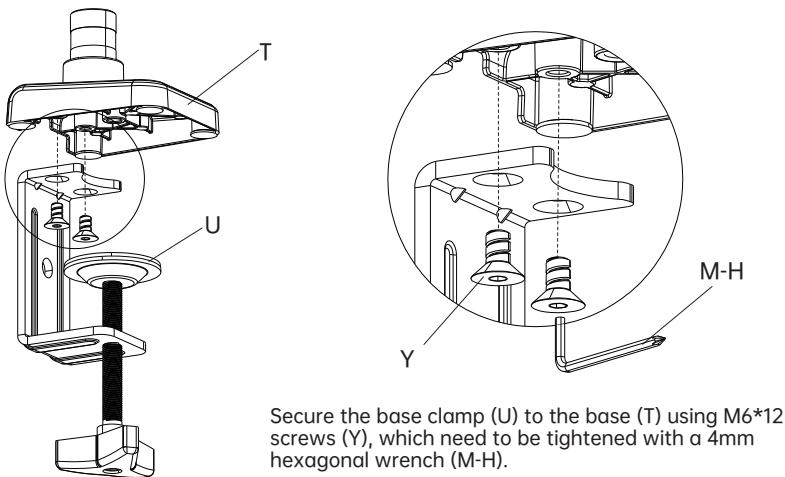
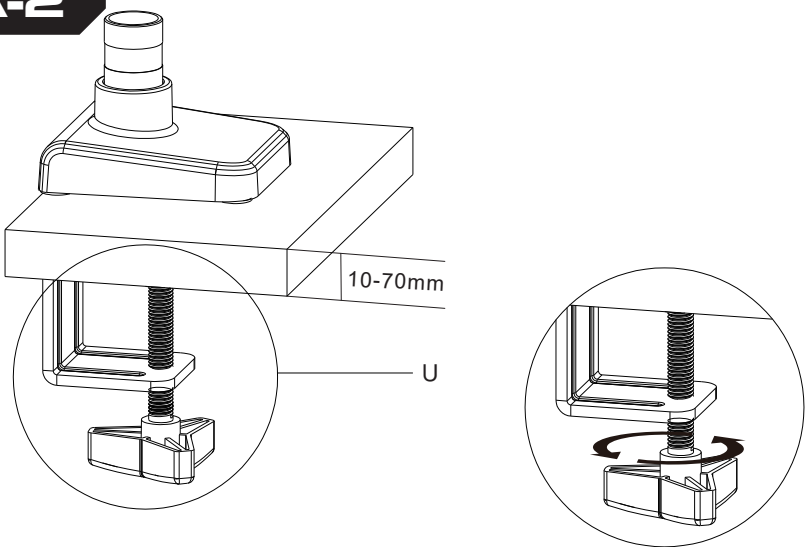


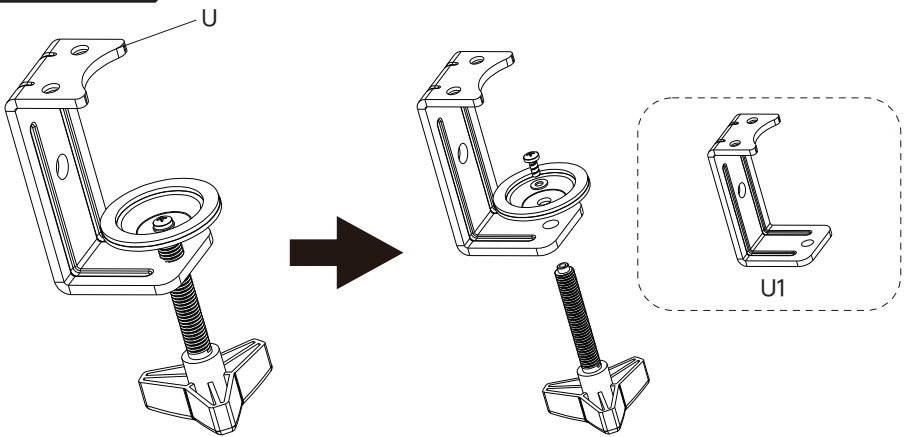
1A-1



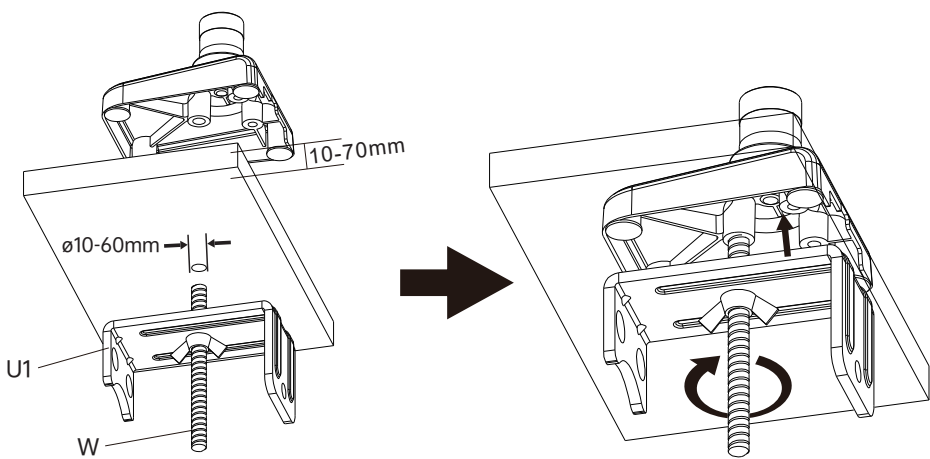
1A-2



1B-1



1B-2

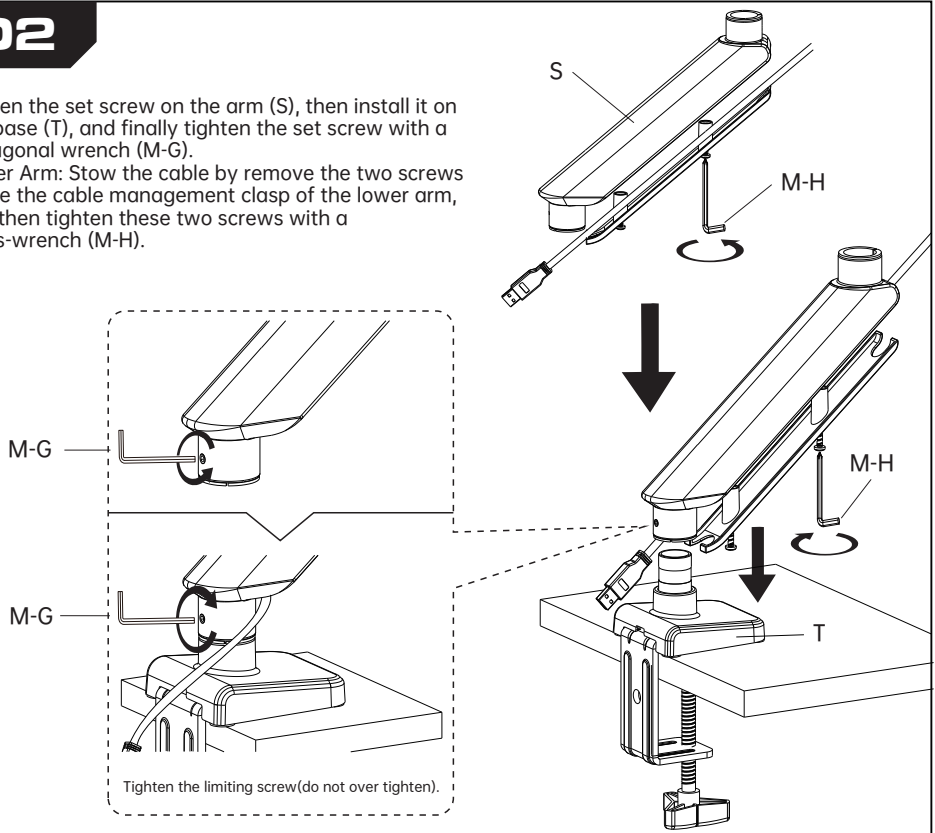


Screw the long screws onto the base first, then tighten the butterfly nuts to secure the base.

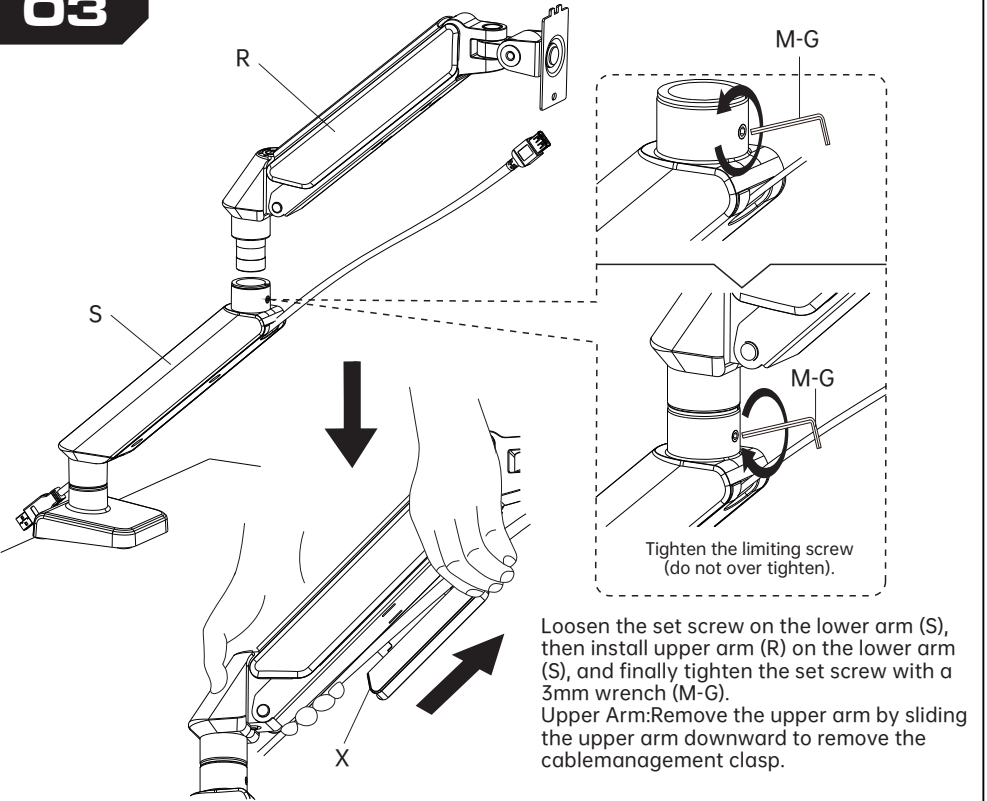
02

Loosen the set screw on the arm (S), then install it on the base (T), and finally tighten the set screw with a hexagonal wrench (M-G).

Lower Arm: Stow the cable by remove the two screws inside the cable management clasp of the lower arm, and then tighten these two screws with a cross-wrench (M-H).



03



04

